

# BIDS MONTHLY NEWS

*BIDS Trading is a registered broker-dealer and the operator of the BIDS ATS, which was designed to bring counterparties together to anonymously trade blocks of stock.*



ONE LIBERTY PLAZA, 23<sup>RD</sup> FLOOR, NEW YORK, NY 10006  
212.618.2060 | 877.566.2437 | BIDSTRADING.COM

## APRIL 2018 TRADING STATISTICS

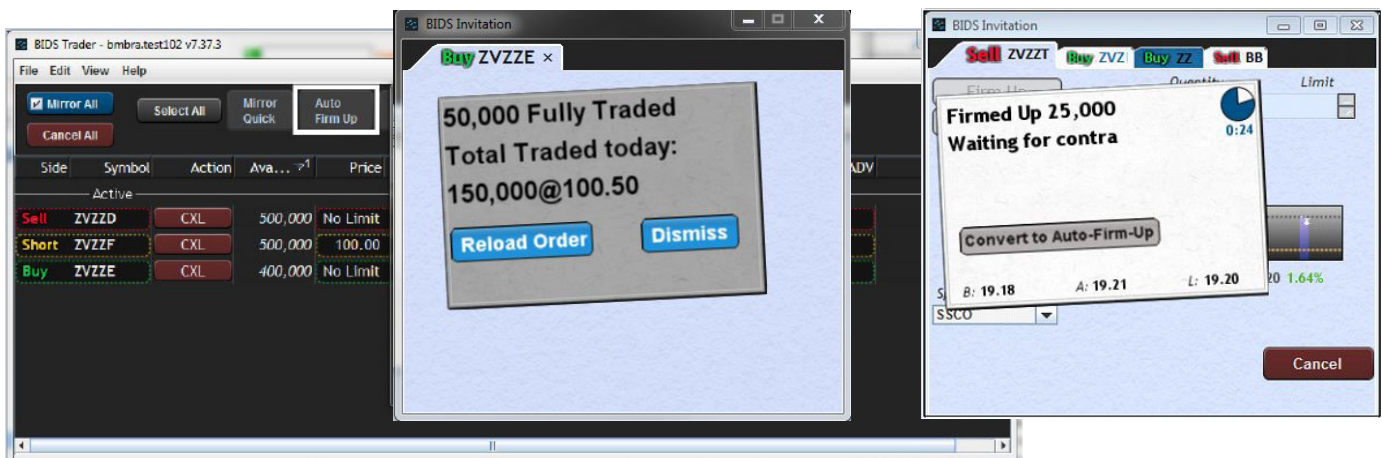
Average Daily Volume*	74.3 million shares
Average Block <sup>†</sup> Execution Size	26,121 shares
Blocks <sup>†</sup> Traded as % of Total Traded Volume	63%
Block Trades Larger Than 50k Shares	1,844
Average Daily Block <sup>†</sup> Volume	47,808,667 shares

\* Figures include all volume traded on the BIDS ATS and do not include any routed volume. Shares are double counted to include both sides of the transaction.  
<sup>†</sup> A block is defined as 10,000+ shares.

## FEATURE OF THE MONTH

**Auto Firm Up** - Allows an order to remain uncommitted in BIDS. The system will respond to a pop-up for the trader behind the scenes.

- For a single order, select the **Auto Firm Up** hot button, modify fields & click **Submit**.
- For multiple orders, use *shift* or *ctrl* keys or click **Select All**, modify fields & click **Submit**.
- **Optional Messaging - Running Stamp** for executions, **Reload** to add volume.
- **Convert to Auto Firm Up** - Reduces a step. Once you firm up from an invitation, we allow you to convert that order to Auto Firm Up order instead of going back to the BIDS Blotter to submit the Auto Firm Up order.



## SPONSORING BROKER/DEALER

Direct 100% of your trading costs in BIDS to the sponsoring broker/dealer(s) of your choice.

- Academy Securities, Inc.
- Avondale Partners
- Bank of America/ Merrill Lynch
- Barclays
- Blaylock Robert Van, LLC
- Bley Investments
- BMO Capital Markets
- BOE Group
- Cabrera Capital Markets, LLC
- Canaccord Genuity Inc.
- Capis
- CastleOak Securities
- Cheevers & Company, Inc.
- Citi
- CLSA Americas, LLC
- ConvergEx - Westminster Research
- Cowen & Co.
- Credit Suisse
- Deutsche Bank
- Drexel Hamilton LLC
- First Analysis Securities Corp.
- Great Pacific Securities
- Greentree Brokerage Services
- Guggenheim Securities, LLC
- Guzman & Company
- Instinet, LLC
- Ivy Securities
- J.P. Morgan
- Jefferies
- Keefe, Bruyette & Woods
- Loop Capital Markets
- Melvin Securities
- Mischler Financial Group, Inc.
- MKM Partners
- Monness, Crespi, Hardt & Co.
- Montrose Securities International
- Morgan Stanley
- North South Capital LLC
- Penserra Securities
- Redburn (USA) LLC
- Rosenblatt Securities
- Roth Capital Partners
- Siebert, Brandford, Shank & Co., LLC
- Stifel Nicolaus
- Strategas Securities
- Sturdivant & Co., Inc.
- Susquehanna Financial
- Themis Trading LLC
- UBS
- Wedbush Securities
- William Blair & Co.
- Williams Capital

Any broker/dealer can be a sponsor in BIDS; there is no fee to become a sponsor and a direct connection to BIDS is not required. To become a sponsor, e-mail us at [info@bidstrading.com](mailto:info@bidstrading.com).

## INTEGRATION PARTNERS

- Advent Moxy
- Bloomberg EMS & SSEOMS
- Charles River Development
- Enfusion
- Eze Software Group
- Fidessa Buy-side OMS
- FlexTrade's FlexTRADER
- INDATA IPM
- InfoReach, Inc.
- Instinet Newport
- ITG's Triton
- JP Morgan's Neovest
- Linedata Longview & Trader+
- Macgregor XIP
- Portware
- Tradeweb

## MARKET CAP & MARKET SECTOR

